

Riley Arts Trail Construction Schedule General Timeline

■ 6/28/24 - 9/25/24

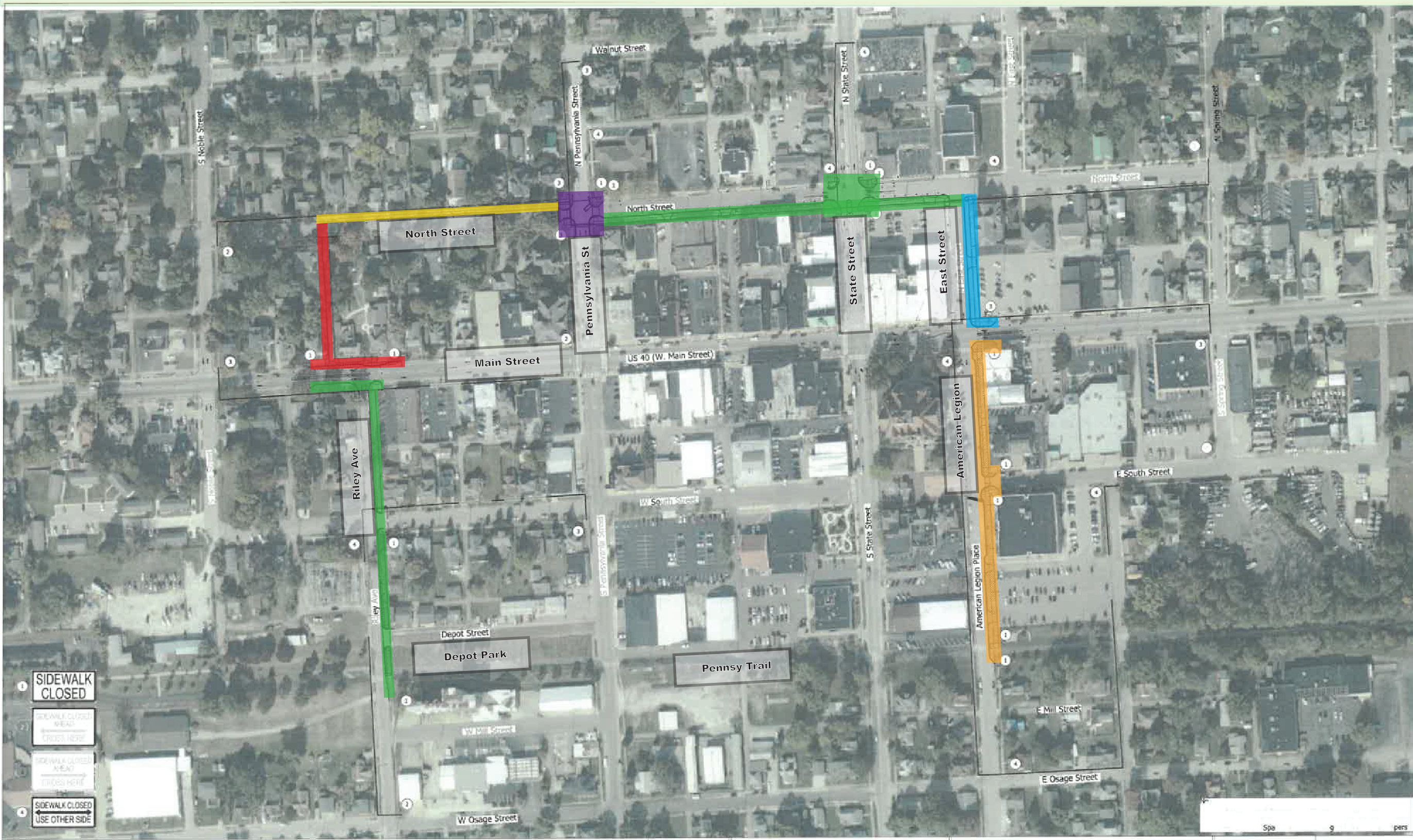
■ 6/28/24 - 9/30/24

■ 10/15/24 - 7/8/25

■ 11/1/24 - 6/16/25

■ 12/4/24 - 7/7/25

■ 9/4/24 - 7/7/25



- 1 SIDEWALK CLOSED
- 2 SIDEWALK CLOSED AHEAD
- 3 SIDEWALK CLOSED AHEAD
- 4 SIDEWALK CLOSED USE OTHER SIDE

the
**Riley
Trail**

Celebrating
the
Arts



This map is intended to show the projected construction timelines for each major length or location along the Riley Arts Trail as broken up in stages, phases, and timelines. These timelines are subject to change. For more detailed information or for questions about the construction process, please contact City of Greenfield's Engineering Department or INDOT.